

# B

## BJS 201905

1

B

- /

B

2

B

B

/

3

GB/T 6682

3.1 CH<sub>3</sub>OH

3.2 C<sub>2</sub>H<sub>3</sub>N

3.3 CH<sub>2</sub>O<sub>2</sub>

3.4 NH · H O

3.5 0.1% : 3.3 1 mL 1000 mL

3.6 50% : 500 mL 3.1 1 L

3.7 0.1% 1 mL 3.3 3.6 1000 mL

3.8 0.1% 1 mL 3.3 3.2 1000 mL

3.9 0.1% 0.1 mL 3.3 35 mL 3.2

100 mL

3.10 5% 5 mL 3.4 100mL

3.11 B

B

CAS

1

99%

1

B

CAS

		CAS		
--	--	-----	--	--

B	Rhodamine B	81-88-9	C <sub>28</sub> H <sub>31</sub> ClN <sub>2</sub> O <sub>3</sub>	479.01
---	-------------	---------	---	--------

3.12 B B 10 mg 0.0001 g  
100 mL  
-18 6  
3.13 0.5 mL B 3.12 100 mL  
500 ng/mL 4 1  
3.14 0.1% 3.9 3.13  
0.0 ng/mL 0.5 ng/mL 1.0 ng/mL 2.0 ng/mL 5.0 ng/mL 10.0 ng/mL 20.0 ng/mL 50.0 ng/mL  
3.15 60 mg/3mL -  
3 mL 3 mL  
3.16  
4  
4.1  
4.2 - / ESI  
4.3  
4.4 8000 r/min  
4.5 0.0001 g 0.01 g  
4.6 50 mL  
4.7  
4.8  
5  
5.1  
5.2  
40  
5.3  
5.4  
5.5



$$= \frac{x}{\times 1000} \times 1$$

$X$                        $B$                        $\text{mg/kg}$   
 $c$                        $B$                        $\text{ng/mL}$   
 $V$                        $\text{mL}$   
 $m$                        $\text{g}$  ;

8

10%

9

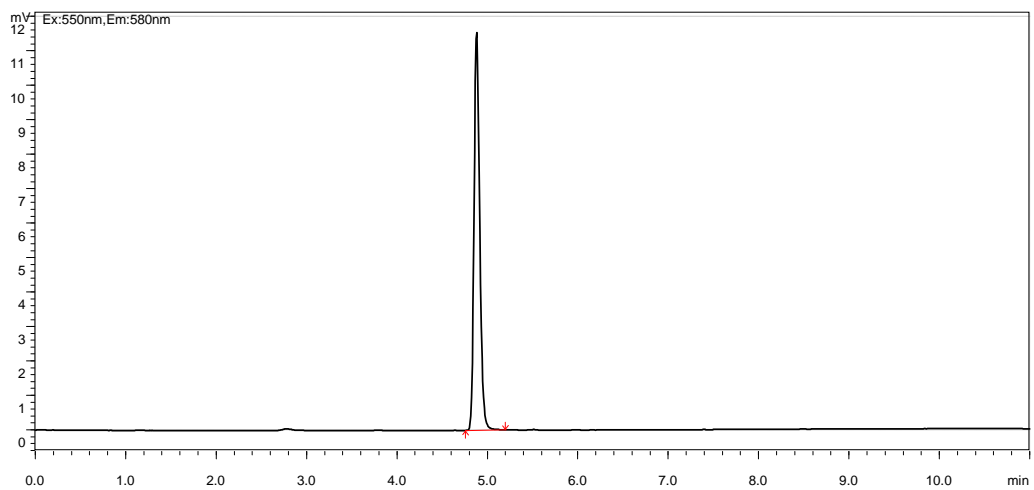
2 g                      1 g                      B                      0.0025 mg/kg  
 0.005 mg/kg                      0.0025 mg/kg                      0.005 mg/kg

10

B                      B

A

B



A.1

B

5 ng/mL

## B

## B

B.1. - /

- a) C<sub>18</sub> 100×3.0 mm 1.7 μm  
b) A 0.1% 3.8 B 0.1% 3.9

B.1

c) 0.4 mL/min

d) 40

e)

h) B.2

B.1

min	A %	B %
0.00	80	20
1.5	80	20
2.5	5	95
3.5	5	95
4.5	80	20
5.5	80	20

B.2

- a) ESI  
b) MRM  
c)  
d) 5500 V  
e) 550  
f) 60.0 psi  
g) 50.0 psi  
h) 25.0 psi  
i)

B.2

	B.2	B	
	m/z	V	eV
B	443.2/399.3*	20	59
	443.2/355.1	20	81

\*

B

B.3.

B.1 B.2

±2.5%

B.3

B

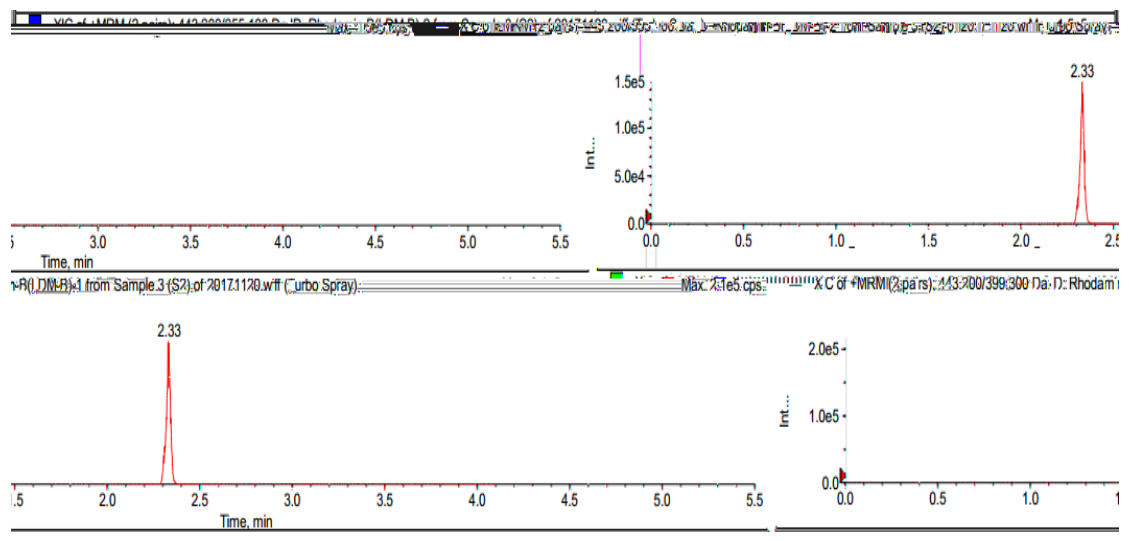
B.3

%	>50	>20~50	>10~20	
%	±20	±25	±30	±50

B

MRM

B.1



B.1

B

